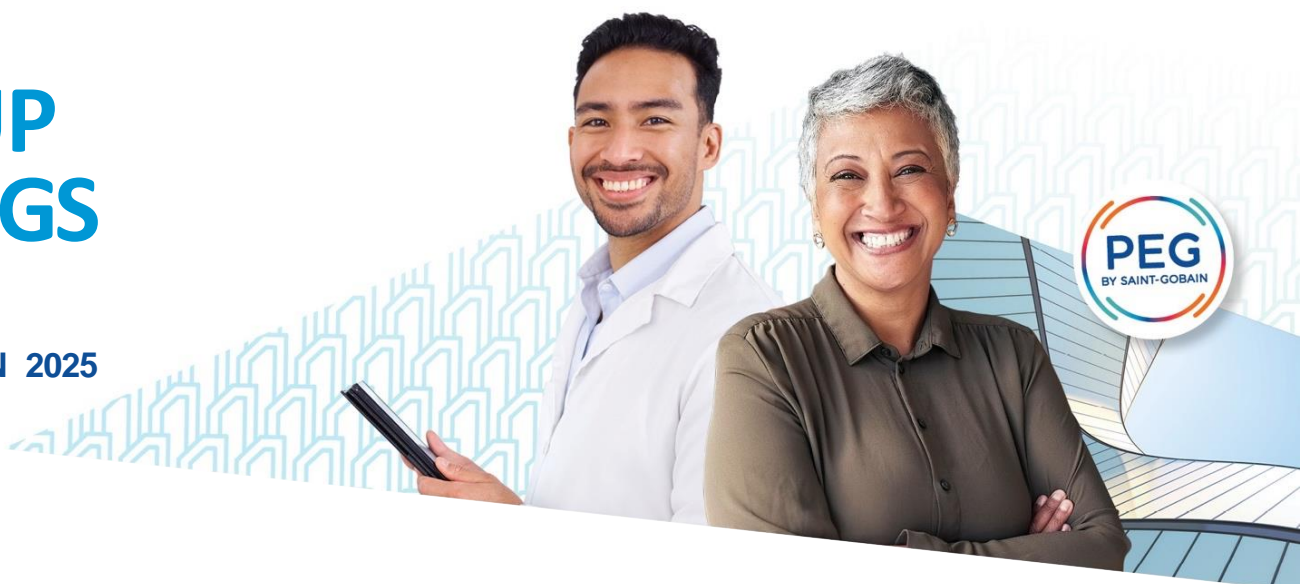


SUBSCRIBE FROM 10  
TO 24 MARCH 2025

# GROUP SAVINGS PLAN


SAINT-GOBAIN 2025



## THE SAINT-GOBAIN PEG IN BRIEF! FROM MARCH 10 TO 24, 2025

TAKE PART IN THE 2025 OFFER AND BECOME A SAINT-GOBAIN SHAREHOLDER  
UNDER PREFERENTIAL TERMS!

Go to the dedicated website <https://peg.saint-gobain.com> and find all the information about the Saint-Gobain PEG, subscribe to the offer by clicking on the “Subscribe to the PEG” button to access the subscription website available from March 10 (10:00 am, Paris time) to March 24, 2025 (11:59 pm, Paris time).

	 CLASSIC FORMULA
Terms	Acquisition of Saint-Gobain shares.
Subscription price	Subscription price including a 20% reduction compared to the reference price.
Matching contribution	[Employer's contribution to be added depending on the Country, with a focus on the percentage of matching contribution of the first level]
Dividends	Profit from any dividends paid as of 2026.
Payment of administrative fees by Saint-Gobain	Payment of administrative and account keeping fees.
Limit of investment	25% of your gross annual remuneration.
Please note before investing	Risk of capital loss.
Lock-up period	5 years.

# FOCUS OF THE MATCHING CONTRIBUTION

Arbejdsgiverbidrag ved den klassiske ordning – EURO				
Interval egen bidrag		Bidrag i % fra selskab	Bidrag fra selskab	Samlet bidragsbeløb
Fra	Til	%	Beløb	Beløb
0	200	100 %	200	400
200	500	75 %	425	925
500	1500	50 %	925	2.425
1.500	5.000	25 %	1.800	6.800

## WHO CAN SUBSCRIBE?

Employees of Saint-Gobain Group companies who have been working for the Group for at least 3 months at the end of the subscription period.

[Depending on the Country, **retired employees** from these companies who meet the conditions set out in the PEG regulations.]

## HOW DO I PAY MY SUBSCRIPTION?

[Payment methods are decided on a country-by-country basis and are either in cash, through a loan or through a salary advance (ask your PEG representative and refer to your country supplement).]



An employer's matching contribution simulator is available on <https://peg.saint-gobain.com>

## KEY DATES



from 02/10/ 2025 to 03/07/ 2025  
Period for setting  
the reference price



03/10/ 2025  
Date for setting  
the subscription price



from 03/10/ 2025 to 03/24/ 2025  
Subscription period



05/09/ 2025  
Bank account debit



05/14/ 2025  
Capital increase

The Saint-Gobain Group reserves the option of changing the aforementioned dates or suspending the operation up until the date of setting the subscription price, namely March 10, 2025.