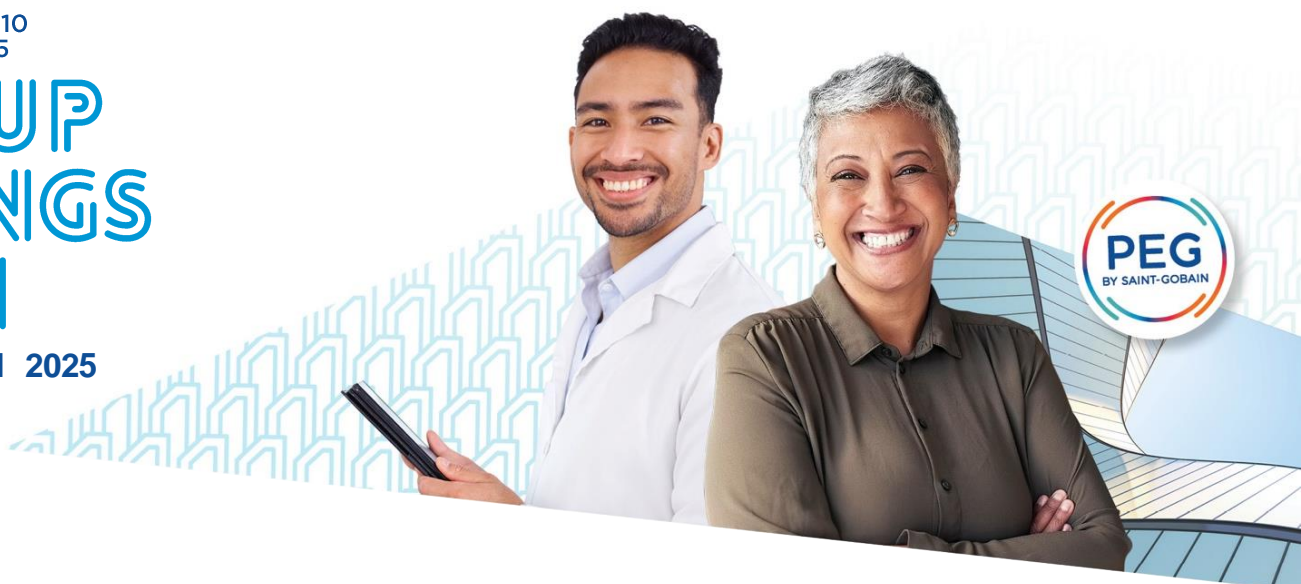


SUBSCRIBE FROM 10
TO 24 MARCH 2025

GROUP SAVINGS PLAN


SAINT-GOBAIN 2025



THE SAINT-GOBAIN PEG IN BRIEF! FROM MARCH 10 TO 24, 2025

**TAKE PART IN THE 2025 OFFER AND BECOME A SAINT-GOBAIN
SHAREHOLDER UNDER PREFERENTIAL TERMS!**

Go to the dedicated website <https://peg.saint-gobain.com> and find all the information about the Saint-Gobain PEG, subscribe to the offer by clicking on the **“Subscribe to the PEG”** button to access the subscription website available from March 10 (10:00 am, Paris time) to March 24, 2025 (11:59 pm, Paris time).

	 CLASSIC FORMULA
Terms	Acquisition of Saint-Gobain shares.
Subscription price	Subscription price including a 20% reduction compared to the reference price.
Matching contribution	The Employer's participation is 75% for each investment up to €200 and 50% for each investment from €201 and Up to €500. The maximum participation is €300.
Dividends	Profit from any dividends paid as of 2026.
Payment of administrative fees by Saint-Gobain	Payment of administrative and account keeping fees.
Limit of investment	25% of your gross annual remuneration.
Please note before investing	Risk of capital loss.
Lock-up period	5 years.

FOCUS OF THE MATCHING CONTRIBUTION

PEG 2025 GREECE

Employee Investment	% Company's Participation	Maximum Company's Participation
Up to € 200,00	75%	150 €
From € 201,00 & Up to € 500,00	50%	150 €

WHO CAN SUBSCRIBE?

Employees of Saint-Gobain Group companies who have been working for the Group for at least 3 months at the end of the subscription period.

HOW DO I PAY MY SUBSCRIPTION?

-Deduction of amounts from your salary, payable in 8 installments from May 2025 to December 2025.

-Direct deposit into a bank account that will be communicated to you in a separate notice.

Contact your local PEG representative (HR Manager).



An employer's matching contribution simulator is available on

<https://peg.saint-gobain.com>

KEY DATES



from 02/10/2025 to 03/07/2025
**Period for setting
the reference price**



03/10/2025
**Date for setting
the subscription price**



from 03/10/2025 to 03/24/2025
Subscription period



05/09/2025
Bank account debit



05/14/2025
Capital increase

