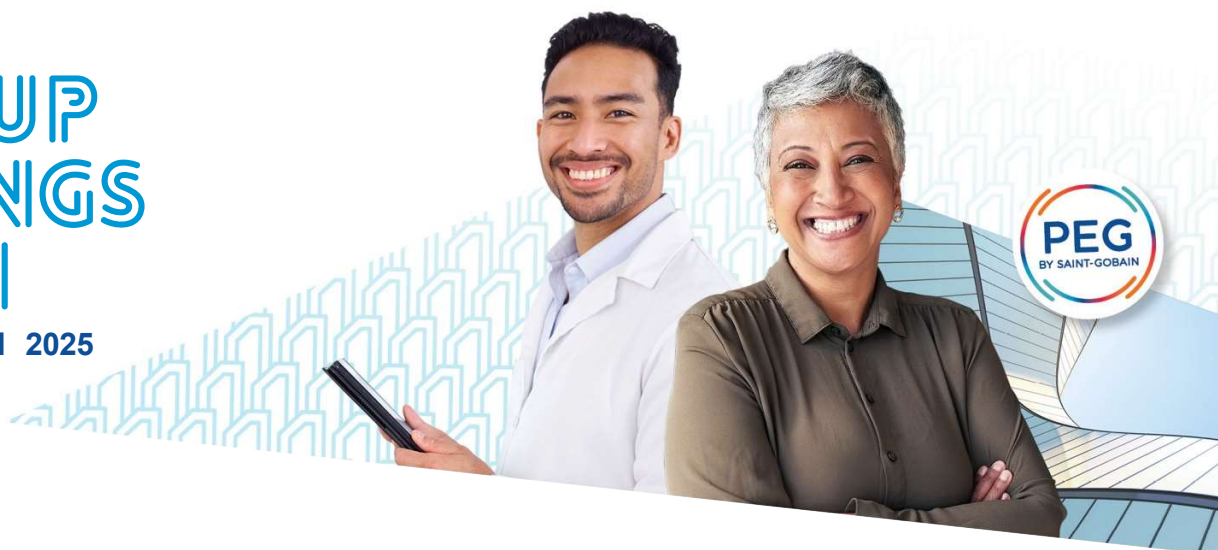


SUBSCRIBE FROM 10
TO 24 MARCH 2025

GROUP SAVINGS PLAN


SAINT-GOBAIN 2025



THE SAINT-GOBAIN PEG IN BRIEF! FROM MARCH 10 TO 24, 2025

TAKE PART IN THE 2025 OFFER AND BECOME A SAINT-GOBAIN
SHAREHOLDER (THROUGH AN EMPLOYEE SHAREHOLDING FUND)
UNDER PREFERENTIAL TERMS!

Go to the dedicated website <https://peg.saint-gobain.com> and find all the information about the Saint-Gobain PEG, subscribe to the offer by clicking on the "Subscribe to the PEG" button to access the subscription website available from March 10 (10:00 am, Paris time) to March 24, 2025 (11:59 pm, Paris time).

	 CLASSIC FORMULA
Terms	Acquisition of shares under the PEG through an Employee Shareholding Fund "FCPE".
Subscription price	Subscription price including a 20% reduction compared to the reference price.
Matching contribution	20% for investment between 1 to 3,800 EUR 10% for investment between 3,801 to 8,200 EUR
Dividends	Profit from any dividends paid as of 2026 (reinvested in the Employee Shareholding Fund "FCPE").
Payment of administrative fees by Saint-Gobain	Payment of management fees of the Employee Shareholding Fund FCPE Saint-Gobain PEG Monde. Payment of administrative and PEG account keeping fees.
Limit of investment	25% of your gross annual remuneration.
Please note before investing	Risk of capital loss.
Lock-up period	5 years.

FOCUS OF THE MATCHING CONTRIBUTION

Employee investment	Matching contribution	Maximum matching bonus
1 to 3,800 EUR	20%	760 EUR
3,801 to 8,200 EUR	10%	440 EUR
Above 8,200 EUR	Nil	Nil
TOTAL		1,200 EUR

WHO CAN SUBSCRIBE?

Employees of Saint-Gobain Group companies who have been working for the Group for at least 3 months at the end of the subscription period.

HOW DO I PAY MY SUBSCRIPTION?

- a) immediate payment in full by way of cheque or bank transfer before May 3, 2025. All cheques or bank transfer shall be made payable to your employer;
- (b) subject to the approval of your employer and to such terms and conditions to be determined by your employer and notified to you, by monthly instalments commencing in May 2025 (maximum 8 instalments); or
- (c) subject to the approval of your employer and to such terms and conditions to be determined by your employer and notified to you, a combination of monthly instalments (maximum 8 instalments) and immediate payment by way of cheque or bank transfer made payable to your employer.



An employer's matching contribution simulator is available on <https://peg.saint-gobain.com>

KEY DATES



from 02/10/2025 to 03/07/2025
Period for setting the reference price



03/10/2025
Date for setting the subscription price



from 03/10/2025 to 03/24/2025
Subscription period



05/09/2025
Bank account debit



05/14/2025
Capital increase

The Saint-Gobain Group reserves the option of changing the aforementioned dates or suspending the operation up until the date of setting the subscription price, namely March 10, 2025.